

# INSIDE THE OUTSIDE: Reconsidering Our Views About Art



Renee Bouchard, *Monk*, 2011, Oil on canvas

*Featuring works by:*

Renee Bouchard  
Danielle Christensen  
Charlie Lucas  
Michael McManmon  
Jessica Park  
Ilene Spiewak  
Students from the College Internship Program  
Works by self-taught artists from the collection of  
Jamie Franklin and Renee Bouchard

February 27 – March 23, 2014

Organized by MCLA's Museum Studies Class, Fall 2013, with support of the Fine and Performing Arts Department  
MCLA Gallery 51 is a program of the Berkshire Cultural Resource Center





Ilene Spiewak, *My Favorite Flower* Acrylic and oil on canvas



# Inside the Outside: Reconsidering Our Views about Art

By Tony Gengarelly, Ph.D, Project Director

“**Inside the Outside**” challenges the viewer to reconsider traditional views about art. Is art limited to standard practices, academic training and established galleries and museums? The work in this exhibition raises that question, for it represents a variety of conditions under which art is made. The works of professionally trained artists and art teachers are interspersed with images from self-taught artists and artists on the autism spectrum. More sophisticated artists draw inspiration from the original visions of self-taught artists. The outsider artist’s unique perspective informs ideas about imagination and creativity. The therapeutic value of art making raises issues about the purpose of art that expresses personal feelings and emotions. Finally, all categories blur with art that combines training and unusual conditions, powerful expression with craft. We invite you to look and reflect, ponder and consider what art is and how it is made.

This exhibition was organized by the students in the fall 2013 Museum Studies class at Massachusetts College of Liberal Arts in collaboration with the staff of MCLA Gallery 51. The exhibition is sponsored by the Fine and Performing Arts Department at MCLA and the Jessica Park Project. We owe special thanks to our partners: Jamie Franklin and Renee Bouchard; the Good Purpose Gallery and College Internship Program in Lee, Massachusetts. We also are grateful for the support of Dianne Steele, Michael McManmon, Ilene Spiewak, Eileen Mahoney, Sharyl Noroian, Christine Condaris, Jonathan Secor, Julia Morgan-Leamon, Jessica Park, Rachel Park, Danielle Christensen, Leon Peters and Terrie Pratt.

# Artist Profiles



## Ilene Spiewak

Ilene Spiewak – Ilene’s background as a painter, therapist, and educator provides a unique perspective on the process of creativity and self-development through art. Her distinctive style is based on building layers of strong, vibrant colors to create her paintings. Ilene’s compositions are slightly off center, bring shape and color combinations to the viewer’s attention, creating the right mix of tension and energy. After relocating to the Berkshires from Philadelphia, Ilene joined the College Internship Program (CIP) where she has worked with a wide range of students on the autism spectrum and with learning differences to help them discover their creative talents. She has been teaching students for over 25 years in the art setting providing them with emotional release and relaxation, increased self-esteem and sense of personal worth.



**Michael McManmon** – Father, grandfather, and founder of the College Internship Program (CIP), Michael McManmon uses his recent diagnosis of Asperger’s as a way of branching out in the art world. Dr. McManmon has an M.S. in Counseling, a M.A. in Human Development, and an Ed.D. in Special Education. He is also a licensed psychologist. Michael started drawing trees as a small child and his fascination with art continues to this day. He works across a number of different mediums such as pen and ink, watercolor, and oils, often exploring with the use of bright colors in his artwork. Michael is also responsible for opening the Good Purpose Gallery, part of the visual and performing arts program at CIP, to develop the talents of students on the autism spectrum and with other learning differences. He accepts himself exactly the way he is, using his talents “for good purpose” to the world.

Michael McManmon



## Renee Bouchard

**Renee Bouchard** is a professional artist and art teacher who lives and works in Bennington, Vermont. She is inspired by art that is, in her own words, “created beyond the boundaries of the traditional ‘art world.’” Here she can “escape the confines of one reality and enter a new reality where she finds meaning within the complexity of the mind and emotions it houses.” She and her husband Jamie Franklin have an extensive collection of folk and self-taught art. She is also drawn to visionary works by artists with mental challenges and to the direct and unfettered communication of children’s art. Like the artists that move her, Renee looks to her inner resources for material. Renee values her formal art training, which includes a Bachelor in Fine Arts from Maine College of Art. But it is her inner work that largely motivates her art. Upon graduation from college in 1999, Renee chose a trip to Morocco, where she meditated on the culture and painted for three months, instead of enrolling in a graduate program in visual art. Renee has received grants from the Vermont Arts Council, the Robert Rauschenberg Foundation, the Kate Millet Art Colony for Women, Vermont Studio Center and the Montana Artist’s Refuge. McDaris Fine Art in Hudson, New York, currently represents her work.



Jessica Park is an internationally renowned artist with autism who lives and works in Williamstown, Massachusetts. Park is represented by the New York studio/gallery Pure Vision Arts. Her art and life have been the inspiration for the Jessica Park Project, an educational program at Massachusetts College of Liberal Arts. The Project is dedicated to publicizing, publishing and displaying the art of Jessica Park.

This exhibition introduces the Jessica Park Project's latest publication: *A World Transformed: The Art of Jessica Park* (on display and available for purchase). This forty-eight page art biography tells the story of an artist with an unusual ability. Jessica Park's lifelong struggle with autism has been transformed through her remarkable art. When she is making one of her signature rainbow-colored paintings, Jessica's autism becomes part of her engine of creativity; her "disability" becomes an *ability*. Art and autism work together to form a unique vision, which this compelling narrative presents through many images of Jessica's work, along with family photographs and insightful illustrations by Danielle Christensen (MCLA 2011). The book, authored by MCLA Professor Emeritus Tony Gengarely and edited by Education Professor Dale Borman Fink, is intended for young readers, but can be enjoyed by everyone. For many, Jessica Park is hope, an artist who has changed her life.

## Jessica Park

# EXHIBITION CHECKLIST

## Michael McManmon

*California Dreamin* 2 18x22 Watercolor on paper  
*Canopy* 18x22 Watercolor on paper  
*Dunes* 18x20 Watercolor on paper  
*On Gold Pond* 22x30 Watercolor on paper  
*Paper on Paper* 14x20 Paper on paper  
*Red Sky 1* 6x24 Watercolor on paper  
*Red Sky 2* 12x24 Watercolor on paper  
*Tree on Wood* 14x20 Ink on wood  
*Amsterdam* 24x36 Giclee print on canvas  
*Berkshire Fall* 24x36 Giclee print on canvas  
*Singapore Sunset* 24x36 Giclee print on canvas

## Renee Bouchard

*Mountain Man (Brainstorm)* 2011 7.5x10 Watercolor and ink on paper  
*Julia* 2009 30x50 Oil on canvas  
*Iceberg/Volcano* 2009 30x24 Oil on canvas  
*In the Womb* 2013 14x16 Oil on canvas  
*Old Man Turning the Clock* 2009 24x30 Oil on canvas  
*Gravitational Slingshot* 2009 24x24 Oil on canvas  
*Monk* 2011 24x18 Oil on canvas  
*Marriage* 2012 20.5x22 Watercolor, graphite, and gesso on paper  
*Small New Universe* 2007 Oil on plaster, plastic and foam insulation on papermache

## Unknown

*Untitled (Rainbow Cart)* c.1950 12x18 Watercolor on paper  
*Rainbow Swirl HookedRug* c. 1935 19x30 Cotton, wool, and man-made fabrics on burlap

## Elsie Gowans (Polly E.G.G.)

*Planet* 1959 8.5x11 Colored pencil on paper  
*Shooting Star Just Out* 1959 8.5x11 Colored pencil on paper  
*Untitled (Interstellar Travel)* 1958 8.5x11 Colored pencil on paper  
*Glass Pie'l Flourist Shop-ee* c.1960 11x8.5 Graphite and ink on paper  
*Untitled (Connect the Dots)* 1958 11x8.5 Colored pencil on paper  
*Secret Door Panel* 1959 8.5x11 Graphite on paper  
*Rainbow Wheel of Light* c.1960 8.5x11 Graphite on paper  
*Untitled (Baby Back Ride)* c.1960 8.5x11 Graphite on paper

## Jacob H. Hamly

*Untitled (calligraphic drawing with Mercury)* 1858 16.5x13 Ink and watercolor on paper



## **Phoebe Hein**

*Rainbow Falls* 1976 7.5x9.5 Oil on canvas board

*Rocky Ridge* 1972 7.5x9.5 Oil on canvas board

## **Joseph Rinkowski**

*Untitled (Beacon of Light)* 1970 12x16 Oil on plaster on found metal

## **Ilene Spiewak**

*Melancholy* 32x36 Acrylic and charcoal on canvas

*Umber* 36x38 Acrylic and graphite on canvas

*My Favorite Flower* 34x52 Acrylic and oil on canvas

*Still Life with Kenyon's Bowl* 18x30 Acrylic, oil stick, graphite on canvas

*Still Life with Blue Plate* 36x38 Acrylic on canvas

## **Rachal Fedderly**

*View From Jacob's Pillow* 12x16

## **Lucy Moore**

*Moribound* Papermache

## **Sara Cohen**

*Anxiety* Papermache

## **Rachel Federly**

*Happiness* Papermache

## **Ellen Orell**

*Untitled Portrait* 28x22 Acrylic on canvas

## **Arbor Pruett & Ashley Porter**

*Untitled Portrait* 28x36 Acrylic on canvas

## **Jessica Park**

*Epcot Center* 2014 22x30 Digital print of acrylic on paper

*The Mount* 2012 22x30 Acrylic on paper

*The Clock Tower* 2010 30.5x25 Digital print of acrylic on paper

*Red Lion Inn*, 2012, 18x24 Digital print of acrylic on paper

*Happy New Year in Times Square*, 2008, 25x19 Acrylic on paper

## **Danielle Christensen**

*MCLA 2011 Original Drawings for A World Transformed:*

*The Art of Jeccica Park* 2010 16.75x13.25 Mixed media on paper

## **Charlie Lucas**

*Looking in the Mind and Seeing the Spirit*, 1990 19x23 Acrylic, graphite and ink on matt board

## Evening Discussions at MCLA Gallery 51, from 5:00 to 7:00

### March 18: Art and Biography

*Feature presenter Jamie Franklin, Curator, Bennington Museum*

The artist's life as a significant or insignificant factor in the understanding and appreciation of a work of art. Why is the artist's story, in certain cases, such an important feature? Should the conditions under which it is made be a determining factor in considering a work of art?

### March 20: Art Education and the Education of the Artist

*Feature Presenter Ilene Spiewak, artist, art therapist, and art teacher for the College Internship Program*

Formal art training and its relationship to qualities of originality, insight and personal vision. Can art be therapeutic—enhance self-esteem and provide a channel for emotional expression—and still be art? Is all art in some way self-taught?

#### **Students in the fall 2013 Museum Studies class,**

Fine and Performing Arts Department, Massachusetts College of Liberal Arts

Project Director: **Professor Tony Gengarely**

Organization of Visual Material: **Brittany Kish**

Opening Program: **Hannah Sterrs and Phil McInerney**

Evening Discussion Organization: **Ryan Walters**

School Group Tours: **Natalie Pozzetti**

Marketing & Publicity:

Poster(s): **Tammy Jean-Feldstin and Cassie Garcia**

Press Release: **Aria Hatfield**

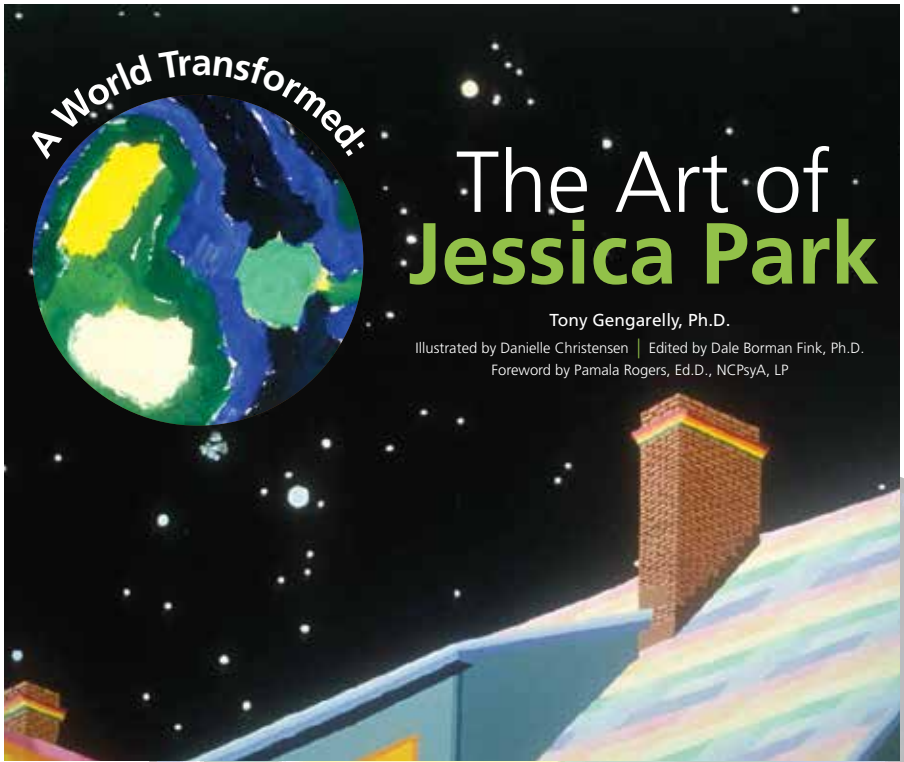
Internet Organization: **Amy Modesti**

Post Card: **Tess Favini**

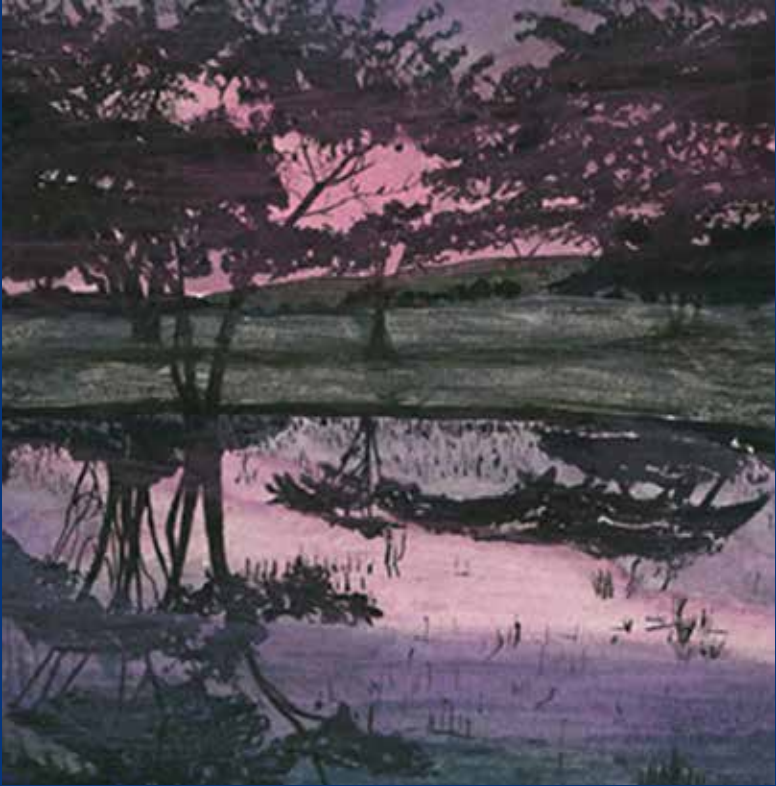
Press Packet: **Taysia Jacobs**

Program: **Kayleigh Brand and Stephanie Vanbramer**

Installation: **Alex Manzino, Austin Bodzioch, and Marguerita Sepulveda**



Tony Gengarely, Ph.D., *A World Transformed: The Art of Jessica Park*, Book Cover (Massachusetts College of Liberal Arts, 2014)



Michael McManmon, *Singapore Sunset* Giclee Print on canvas (detail)

